

SunBody Hats

Reata 3
p. 7

Reata
p. 6

Golden Boxtop
p. 15

are fun!

Golden Gus
p. 14

www.sunbody.com
1-800-310-7093

Kids' Hats
p. 12-13

Low Crown
Cattleman
p. 8



Making palm leaf hats - p. 3

Houston, Texas

2020-21 Catalog

*Over
1.4 Million
Hats Sold!*



Highest sun protection
rating earned - p. 4

Everybody Needs SunBody Sun Time

Hi!

SunBody Hats is 24 years old! We've sold well over 1.4 million hats, and we're still growing. 2019 was our best year yet.

"FUN" and "PRACTICAL" are two of the biggest factors in our success. Being able to get the hats wet and shape them yourself, as a dealer or an end user, is an endless source of entertainment.

And the fact that they stand up to the beating they get in rough and tumble of outdoor life, combined with a reasonable price, makes them the most practical hats around.

The 125 or so hats you see this catalog are just a sampling of the endless possibilities. Starting with the 40 unshaped hat bodies we stock, we can shape and trim the hats like you want them. We can bind the edges in many different colors and patterns, eyelet in different colors, shape in different ways, use a variety of different hat bands and choose from several different stampede strings (chin straps).

On our website you will find even more hats and trimming possibilities, along with information on how the hats are made, getting the right size and links to the long history of palm leaf hat making. Register and we'll send you information on special sales and new hats.

You can even order online if you wish. We've made it easier for wholesale buyers with a table-style order form.

"We're the leader in palm leaf hats" is not just a slogan: 30 years of experience working directly with hatmakers in Guatemala and Mexico that sew them together and doing the finishing in our shop in Houston gives us unrivaled flexibility in supplying you with the hats you want.

We have:

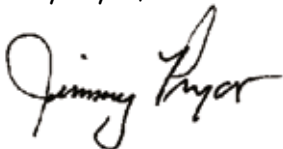
The Most Styles: Guatemalan and Mexican palm leaf hats. Exclusive dealer of the Guatemalan Fine Palms (see right). We have 40 open crown hats.

The Most Options: Creasing, eyeletting, edge-binding, brim lacing, sweatbands, accessories.

The Most Sizes: Miniatures for dolls and dogs, sizes 5 to 6-1/4 for babies and toddlers, children's one-size-fits-most, and up to size 8 in our adult hats. We can fit anybody.

We invite you to have fun with us by selling our hats. And by all means, give us your ideas for new hats, new ways we can have fun together.

Jimmy Pryor, President



What's so special about palm-leaf hats?

They're tough - rain or shine:

Sewn-braid palm leaf hats are about the toughest hats you'll find. The overlapping layers of palm braid form an almost impenetrable sun block. And when they get wet, they stiffen and keep their shape - making them great in the rain or the river.

You can wet 'em and shape 'em:

They are easily re-shaped, too, with plain water - no steam is required. You can use a spray bottle, hold it under the faucet, or dip it in a bucket. They can be shaped by hand, and you can modify your pre-shaped hat to your desired look.

You can crush 'em and pop 'em back out to shape:

A horse can step on one and if the hoof doesn't cut completely through, you can pop it back out and keep wearing it. Packing them flat in a suitcase is possible, but will require some re-shaping and is not recommended.

Five Different Hat Qualities:

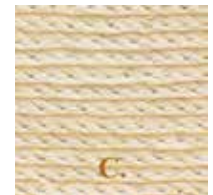
(Shown actual size)



A. Guatemalan Economy Palms: 5 strands of braid per inch. Used on the kid's one-size hats and the economy palms (pages 8 & 30). No stiffener added.



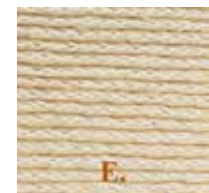
B. Guatemalan Standard Palms: 7 strands of braid per inch. Our most popular hats. No stiffeners added, shaped by hand on wooden molds. Easily reshaped using water. No steam necessary. May shrink a little if dried in the heat. Conform to wearer's head. Repeated washings will result in a softer hat.



C. Guatemalan Fine Palms: 10-12 strands of braid per inch. Like all of our Guatemalan palms, they can be reshaped with plain water and are flexible. The palm is bleached so that no whitener is needed. Hats are available hand-creased (with cold water on wooden molds), or open crown.



D. Guatemalan Oak-Colored Palms: 7 strands of braid per inch. The palm is boiled for three hours prior to braiding. This turns it a light brown color. No dye or stain is used. They are softer and more flexible than the standard palms. Easily reshaped.



E. Mexican Fine Palms: 14+ strands of braid/inch, giving the hats a very fine appearance, nice dress hats. Pressed in heated molds. The "golden" hats are toasted in their heated molds. They are very soft. We also have several of these Mexican palms that are soft, and natural colored (not toasted). Others are stiffened and whitened with paint. These hats are more difficult to reshape and we don't recommend it. All can withstand rain and submersion.

How Guatemalan Palm Leaf Hats Are Made

1-800-310-7093
www.sunbody.com
1-713-861-5133

SunBody Hats
2020-2021 Catalog
Page 3



The palm for Guatemalan palm leaf hats is harvested from palm trees on the southern coast of Guatemala where they grow wild near the mangrove swamps. Independent harvesters paddle out in their boats before the break of day to cut slender, un-opened



palm shoots from young trees. When the trees are older, the new leaves are too high for easy harvesting. The harvesters return to the beach where they sell their day's harvest to palm dealers.



The dealers open the fronds and tear off the outer edges of the leaves which are dark green. The inner leaf, untouched by sun, is a pale yellow color. The leaves are opened up like fans and spread on the beach to dry and be sun bleached.



The dried palm is trucked to Quiche in the Western highlands. It is bleached and sold in the marketplace on Thursdays and Sundays. The buyers, peasant women, take the palm home and braid it into a flat, seven-strand plait. They return to market to sell the braid.



The hatmakers, men and women, buy the braid, take it home, and sew it into hats. They begin with the top of the crown and sew in a spiral, overlapping the braid as they go. For more pictures and a more detailed account of this story, visit our website: www.SunBody.com.

Table of Contents

<i>Open crown, unshaped hats:</i>	<i>Pages 4-5></i>
<i>Reatas and Elkos:</i>	<i>Pages 6-7></i>
<i>Western Classics:</i>	<i>Pages 8-11></i>
<i>Kids, Baby, Miniatures:</i>	<i>Page 12-13></i>
<i>Mexican Pressed Palms:</i>	<i>Pages 14-15></i>
<i>Gus and Old West:</i>	<i>Pages 16-17></i>
<i>Laced-Brims:</i>	<i>Pages 18-20></i>
<i>Bound-Edge Gus:</i>	<i>Page 21></i>
<i>Fun, Funky, Fedoras:</i>	<i>Pages 22-23></i>
<i>Fashion Favorites:</i>	<i>24-26></i>
<i>Hatbands and Accessories:</i>	<i>Pages 27-29></i>
<i>Palm River Economy Hats:</i>	<i>Page 30></i>
<i>Photos of Hatmakers & Sun Bodies:</i>	<i>Page 31></i>

You, too, can shape a palm-leaf hat!

Try it! You'll be surprised at how much fun it is.



1. Get it wet.

Dunking in a tub works best. Just dip it in and pull it right back out. Don't soak it. That will wash the natural starch out and make it soft.

After you dunk it, let the water soak into the palm fiber. When the hat is wet, it will be hard and stiff. But that's also the time you can shape it.



2. Shape the crown.

To make a cattleman, use the side of your hand to make a crease in the top of the hat. Use the small rectangle of palm at the very top of the crown and the small seam in the brim that marks the middle of the back as guides.

To achieve symmetry, it sometimes helps to look at the hat from the bottom.



3. Shape the brim.

Using both hands, fold the sides of the brim up. Try it by looking at the hat from the front and the back to see what works best for you.

Don't be afraid to experiment. If the hat is wet, you won't hurt it.

Just get your hat wet and play with it. You'll be surprised at how much fun it is.

To try a new shape, you can push the crown back out to a rounded shape and flatten the brim against a table top. When the hat dries, it will remember the shape it has and pop back out to that shape if it gets crushed.

Dealers Who Shape Hats Sell More!

Shaping palm-leaf hats always attracts a crowd.

Dunk a palm-leaf hat into a bucket of water and watch people stop in their tracks. Watch the awe and amazement as you pluck the dripping hat from the bucket and begin to shape it. People are always drawn to action and a good show. Our best customers are those that shape palm leaf hats for their customers.



SunBody's Hats Earn Highest Protection Rating

An independent laboratory has certified that ALL of SunBody's palm leaf hats, both Guatemalan and Mexican, block 99.9% of harmful ultraviolet (UV) sunlight and are certified to use the highest protective rating of **UPF 50**.

Our hats block both UV-A, which causes sunburn, and UV-B, which causes skin cancer. For more information, visit our website: www.sunbody.com.

40 Different Hat Bodies

- 8 different brim widths
- 7 crown heights
- 5 qualities and price levels

ECONOMY Guatemalan Palms (Five to Six strands of braid per inch.)

- hg4a-eco 4" Brim, 5-1/4" Crown (see p. 30)
hg5a-eco 5" Brim, 5-1/4" Crown (not shown)

STANDARD Guatemalan Palms (Seven strands of braid per inch.)

- hgb Baby Hats: 6 sizes to fit 3 months to 36 months, brim and crown dimensions proportionate to hat size. See price list
- hg25-oak 2-1/2" Brim, 5-1/4" crown, oak-colored
hg3 3" Brim, 5-1/4" Crown
hg35 3-1/2" Brim, 5-1/4" Crown
hg35aw 3-1/2" Brim, 5-1/4" Crown, wire in brim (not shown)
hge 4" Brim, 4" Vented Crown (Española, see p.26)
hge-oak 4" Brim, 4" Vented Crown (Española, see p. 26)
hge3s 3" Brim, 4" Solid Crown, (Bolero, see p. 26)
hge3s-oak 3" Brim, 4" Solid Crown, oak-colored (Oak Bolero, p.26)
hge35s 3-1/2" Brim, 4" Solid Crown (Bolero p.26)
hge35s-oak 3-1/2" Brim, 4" Solid Crown, oak-colored (Oak Bolero p.26)
hg4t 4" Brim, Topless (no crown)
hg4a 4" Brim, 5-1/4" Crown
hg4a-oak 4" Brim, 5-1/4" Crown, oak-colored (p.10)
hg4ap 4" Brim Alligator Palm (Open Crown, not shown)
hg4aw 4" Brim, 5-1/4" Crown, wire in brim (not shown)
hg4b 4" Brim, 5-3/4" Crown
hg45 4-1/2" Brim, 5-1/2" Crown (not shown)
hg45-oak 4-1/2" Brim, 5-1/2" crown, oak-colored (not shown)
hgv 4" Brim, 5-3/4" Vented Crown
hg5x4 5" Brim, 4" Crown
hg5a 5" Brim, 5-1/4" Crown
hg5b 5" Brim, 5-3/4" Crown
hg5b-oak 5" Brim, 5-3/4" Crown, Oak-colored (not shown)
hg5c 5" Brim, 6-1/2" Crown
hg5v 5" Brim, 5-1/2" Vented Crown
hgflat 6" Brim, 1" Crown (size 6 only, not shown)
hg6a 6" Brim, 5-1/4" Crown
hg6b 6" Brim, 5-3/4" Crown
hg8b 8" Brim w/roll, 6" Crown
hgtop Top Hat, 2-1/2" Brim, 7" Crown (p. 11)
hgtop25x55 Top Hat, 2-1/2" Brim, 5-1/2" Crown (p.21)
hgtop5x7 Top Hat, 5" Brim, 7" Crown (p.11)

FINE Guatemalan Palms Available ONLY from SunBody Hats! (11 strands of braid per inch.)

- hg25f 2-1/2" Brim 5-1/4" Crown (not shown)
hg3f 3" Brim, 5-1/4" Crown (not shown)
hg35f 3-1/2" Brim, 5-1/4" Crown (not shown)
hg4f 4" Brim, 5-1/4" Brim
hg5af 5" Brim, 5-1/4" Brim

EYELETING & EDGE-BINDING

We'll add ventilation or stampede string eyelets to any hat. We will also bind the edge and make a matching hatband for any hat. Many colors to choose from. See page 27 for eyeletting and color options.

See table at lower left for a listing of all open crown hats. Some are not shown.



Our #1 Best Seller



**4" Brim
Coffee**



**4" Brim
Cranberry**

**4" Brim
Turquoise**



4" Brim Reata

4" brim, 4-1/4" crown, Reata crease (flat top crown, brim turned up slightly on the sides and in back). Shown bound in coffee, cranberry and turquoise. Guatemalan standard palm.

Item# hg4b+RT+be (color)

When the documentary "Buck" about the legendary horse-trainer Buck Brannaman came out in 2011, we began getting calls looking for the hat that Reata, his daughter was wearing. Reata sells SunBody hats at Buck's clinics and wears them everywhere. In cooperation with Reata we're offering them to you. It's now our #1 hat!

**Best
Seller
Top 20**

**3-1/2" Brim
Pink**



Item# hg35+RT+be (Lt.Pink)

**4" Brim
Oak-Colored,
Coffee**



Item# hg4a-oak+RT+BE (coffee)

**4-1/2" Brim,
Not-bound**



Item #hg45+RT

**4" Brim Fine
Palm, Brown**



Item# hg4f+RT+be (brown)

**5" Brim Fine
Palm, Black**



Item#hg5af+RT+be (black)

All hats are Guatemalan palm. Edge-binding is grosgrain ribbon. Other colors are shown on page 27.
For a complete list of available colors visit our website: Sunbody.com.



**Best
Seller
Top 10**

Reata TWO.

This style is popular now with Reata Brannaman's customers. It first caught on in the Great Basin area of the U.S., but its popularity has spread quickly and in its first year became one of our best sellers. Guatemalan standard palm 4-1/2" brim, 4-1/4" crown (shown). Sizes 6-1/2 to 8. Available in other brim widths.

Item # hg45+R2



**Best
Seller
Top 10**

Reata Three.

This is a variation on the Reata Two. The only difference is that the center of the crown is pushed back up. This allows for a shorter crown crease and more space for the wearer's head. Guatemalan standard palm. 4-1/2" brim, 4-1/4" crown Sizes 6-1/2 to 8. Available in other brim widths

Item #hg45+R3



**Best
Seller
Top 30**

Elko with Leather Band.

4" Brim, Elko creased crown. Black leather hatband with nickel buckle. Guatemalan standard palm.

Item #hg4a+EK+blb38; w/ribbon band, Item#hg4a+EK (not shown)



NEW!

Oak Reata Three.

Oak-colored Guatemalan palm. 4-1/4" crown (creased). suede lace hatband. Sizes 6-1/2 to 8.

4-1/2" brim (shown) Item #hg45-oak+R3; 4" brim, Item#hg4a-oak+R3; 5" brim Item #hg5b-oak+R3



Oak Elko w/Old West Band-4" Brim

Natural oak-colored palm, 4" brim. Elko crease, old West style hand-made leather hatband with studs. Sizes 6-1/2 to 8.

Item # hg4a-oak+EK+bowb



Oak Elko w/Old West Band-5" Brim

Natural oak-colored palm, 5" brim. Elko crease, old West style handmade leather hatband with studs. Sizes 6-1/2 to 8.

Item # hg5b-oak+EK+bowb

**Best
Seller
Top 10**



4" Brim, Low Crown Cattleman

4" or 4-1/2" Brim, 5-1/4" Crown, creased down to 4-1/2". Guatemalan standard palm. **4" Brim: Item #hg4a+C+E (with eyelets as shown), Item # hg4a+C (without eyelets)**
4" brim with wire: Item#hg4aw+C.

Our Two Best Creased Hats

**Best
Seller
Top 10**



4" Brim, Medium Crown Cattleman

4" Brim, 5-3/4" Crown, creased down to 5". Guatemalan standard palm. **Item #hg4b + C + E (with eyelets); Item #hg4b + C (without eyelets).**



4" Cattleman with Bound Edge

Many edge colors available. (See p.27). Matching eyelets for most colors. Guatemalan standard palm. Sizes 6-1/4 to 8.

Low Crown (shown) Item # hg4a+C+E+BE(color).



Oak Cattleman

Natural oak-colored palm, 4" or 5" brim. Cattleman crease. Light brown hatband. Sizes 6-1/2 to 8. (Hatband as shown.)

4" Brim: Item #hg4a-oak+C+b126b

5" Brim: Item# hg5b-oak+C+b126b

**Best
Seller
Top 30**



3-1/2", 4-1/2" and 5" Brim Cattleman. 3-1/2" is popular for kids, fashion hats, and those desiring a smaller brim. Sizes 6 to 8. Guat. standard palm. 4-1/2" and 5" brims are popular with cowboys and cowgirls who need more shade. Sizes 6-1/2 to 8. Guat. std palm. **3-1/2" brim with eyelets: Item #hg35 + C + E; without eyelets: Item # hg35 + C; With wire in brim: Item # hg35aw+C+E (w/eyelets); 3-1/2" wire w/o eyelets: Item # hg35aw+C; 4-1/2" brim, 4-1/2" crown (creased): Item #hg45+C+E (w/eyelets); Item #hg45+C (w/o eyelets); 5" brim, 4-3/4" crown (creased): Item # hg5b+C+E (w/eyelets); Item # hg5b+C (w/o eyelets)**



**Best
Seller
Top 30**

5" Brim, LOW Crown Cattleman.

5" brim, creased down to 4-1/4", Guatemalan standard palm.

Item # hg5a+C+E (with eyelets as shown);

Item# hg5a+C (without eyelets)



**Best
Seller
Top 30**

4" Brim Vented Cattleman.

4" brim, 4-1/2" crown (creased). Breezy ventilation makes this a popular hat. Guatemalan standard palm.

Item #hgv + C



4" Guatemalan Fine Palm Cattleman.

Very nice hat. 4" Brim, 4-1/2" Crown (creased). Hatband as shown.

Item# hg4f+C+b126b (as shown)

Item# hg4f+C (with black cloth band)



5" Brim Vented Cattleman.

5" brim, 5-1/2" crown (creased). Ventilated crown. Guatemalan standard palm.

Item # hg5v+C



Austin, 4" Low Crown.

4" brim, 4-1/4" crown (creased), coffee bound-edge, matching eyelets and leather hatband.

Item # haust4a.



Austin, 5" Low Crown.

5" brim, 4-1/4" crown (creased), coffee bound-edge, matching eyelets and leather band.

Item # haust5a



New Oak Open Crown.

4" brim, 5-1/4" crown oak-colored Guatemalan palm is shown. Other new open crown hats we have are the 2-1/2" brim oak-colored palm; the 5" brim, 5-1/4" crown Guat. standard palm, the 5" brim vented crown and the 4" brim Española in the oak-colored palm.

Item #hg4a-oak (4" oak); hg25-oak (2-1/2" brim); hg5a (5" brim low crown); hg5v (5" vented)



**Best
Seller
Top 20**

Silver Creek Fedora, Soft

Mexican pressed palm, soft (not stiffened). Reshaping not recommended. 3-3/4" brim. 4" crown. Ventilation eyelets. Sizes 6-3/4 to 7-5/8.

Item # hmcssoft

**Best
Seller
Top 20**



Oak Boxtop

Natural oak-colored palm, 4" or 5" brim. Boxtop crease. Sizes 6-1/2 to 8.

4" Brim: Item # hg4a-oak+BT, 5" Brim: Item #hg5b-oak+BT



Guatemalan Standard Boxtop

Natural beige-colored standard Guatemalan palm, 4" or 5" brim. Boxtop crease. Sizes 6-1/2 to 8.

4" Brim: Item # hg4a+BT, 5" Brim: Item #hg5b+BT

NEW!



Oak Tear Drop, 4" Brim

4" Brim, Guatemalan oak-colored palm. 4-1/4" crown (creased). Shown with tan leather stampede string. Sizes 6-1/2 to 8.

Item # hg4a-oak+TD+sslt

NEW!



Tear Drop, 4" Brim

4" Brim, Guatemalan standard palm. 4-1/4" crown (creased). Shown with brown leather stampede string. Sizes 6-1/2 to 8.

Item # hg4a+TD+sslbr



5" x 7" Top Hat

5" brim, 7" crown, Guatemalan standard palm, sizes: 6-7/8 to 7-3/4. Limited inventory. 4.5" x 6" and 6" x 7" may be available.

Item # hgtop5x7



**Best
Seller
Top 40**

Top Hat - 7" Crown

1-1/2" rolled brim, 7" crown. Classic top hat. Guatemalan standard palm.

Item # hgtop-R (with rolled brim as shown)

Item # hgtop (without rolled brim)

Item# hgtop+R+be15e (with 1-1/2" hatband, shown on back cover)

**Best
Seller
Top 40**



Vented "Alligator" Palm Cattleman

3-1/2" wired brim. Popular as a "retro" style, and an old time farm favorite. Wire in brim for easy shaping. Item #hg35ap + C. 4" Brim (not shown):

Item#hg4ap+C. 4" open crown: Item#hg4ap



Braiding palm in Guatemala. A typical 4" brim Guatemalan palm-leaf hat is made from 150 feet or more of 7-strand palm braid.

NEW!



Tear Drop, 4" Brim, Vented

4" Vented Brim, Guatemalan standard palm. 4-1/4" crown (creased). Shown with brown leather stampede string. Sizes 6-1/2-7 to 8.

Item #hgv+TD+sslbr.



Aussie Tear Drop

4" brim. Tear Drop crease with a funky curled brim. Guatemalan standard palm. With or without wire in brim.

Item #hAus4aw+TD (with wire in brim as shown)

Item # hAus4a+TD (without wire in brim)



**Best
Seller
Top 20**

Kid's Cattleman

3-1/2" brim. This Guatemalan economy palm (see page 2) has an elastic sweatband to fit sizes 6-1/4 to 6-7/8. **Item #hgkc**
See also our Baby Hats on p.11 and Adult economy palm on p.30.



Kid's Cattleman with Bound-Edge

3-1/2" brim. Black and red are shown, but many other colors are available. Guatemalan economy palm, elastic sweatband to fit sizes 6-1/4 to 6-7/8. **Item #hgkc+BE (color)**

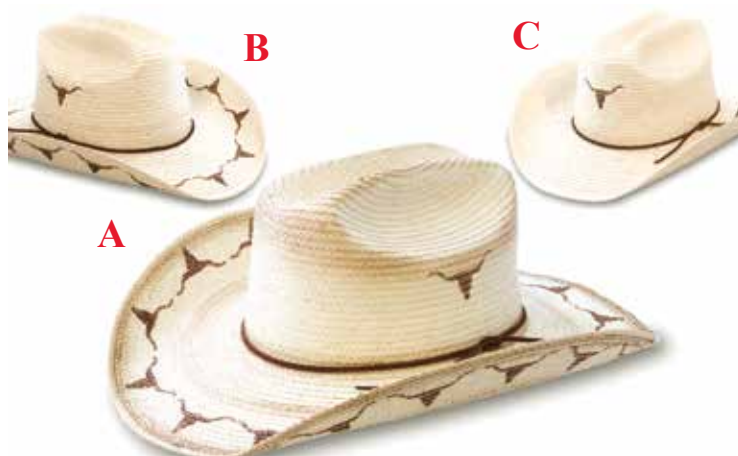


Kid's Boots Cattleman

One-size Guatemalan economy palm fits 6-1/4 to 6-7/8.
Item #hgkc-boots2



Kid's Running Horses Cattleman - One-size Guatemalan economy palm fits 6-1/4 to 6-7/8. **3 Options:** Horses around brim and distressed **Item # hgkc-lhb3** (not shown), Horses around brim, not distressed: **Item # hgkc-rh2** (shown), One horse on front of crown: **Item #hgkc-rh1**(not shown).



Kid's Longhorn Cattleman - 3 Options

(A) Longhorns around brim and distressed: **Item #hgkc-lhb3**
(B) Longhorns around brim, not distressed: **Item # hgkc-lhb2**
(C) One longhorn on front of crown: **Item #hgkc-lhb1**



Kid's Barbed Wire Cattleman

Barbed wire design on brim & crown as shown: **Item # hgkc-bw**



Baby Hats! Cattleman, Gus, Open Crown

Sized hats to fit real babies and toddlers. Sizes 5, 5-1/4, 5-1/2, 5-3/4, 6, 6-1/4, 6-1/2. Brims and crowns are scaled to be proportionate to hat size. Guatemalan standard palm. **Baby Cattleman (right)-Item #hgb+C; Baby Gus - middle, Item#hgb+G; Open crown (unshaped,not shown)-Item#hgb.** Be sure to specify size.



Mexican Kid's Boxtop

Description: Pressed and stiffened Mexican palm. One-size elastic sweatband fits up to size 6-7/8.
Item# hmbtk



Kid's Open Crown & Kid's Reata

Kid's Open Crown hat can be shaped with water just like all the other Guatemalan hats. Here we have shaped it into a Reata.
Kid's Open Crown, Item # hgko. Kid's Reata, Item # hgko+RT.

**Best
Seller
Top 40**



Miniature Palm Hats

Great for dolls, dogs, table decorations and Christmas tree ornaments. Wet & shape like all the Guatemalan palms. Standard palm. Stampede string included.
Cattleman: Item# minic_ssp; Gus: Item # minig_ssp. Reata: Item# minirt-ssp.



Kid's Gus

3-1/2" brim Guatemalan economy palm, elastic sweatband to fit sizes 6-1/4 to 6-7/8. Bound-edge and laced brim available. Item # hgkp

Kid's Pecos - A wide crowned cattleman crease. 3-1/2" Brim. Guatemalan economy palm. Pressed in heated molds (hard to reshape). Elastic sweatband fits sizes 6-1/4 to 6-3/4. Item# hgkp

**Best
Seller
Top 10**



Golden Gus

This is a very soft and comfortable hat. 4" Brim, 5-1/2" Crown. Pressed. NOT stiffened. Re-shaping not recommended. See p.2 for discussion. Sizes 6-7/8 to 7-5/8. Brown bound-edge. **Item # hmggold**



Golden Cattleman

This is a soft and comfortable hat. 4" Brim, 5-1/2" Crown. Pressed. Lightly stiffened. Re-shaping not recommended. See p.2 for discussion. Sizes 6-5/8 to 7-5/8. Brown bound-edge. **Item # hmcgold**

**Best
Seller
Top 20**



**New: Now
available in soft,
un-stiffened
palm."**

Mexican Fine Palm Gus: (Soft or hard.)

4" Brim, 5-1/2" Crown. Pressed, sanded & stiffened. Re-shaping not recommended. See p.2 for discussion. Sizes 6-3/4 to 7-1/2. Edge-binding available. **Stiffened, Item # hmg. Soft, Item # hmgsoft.**

NEW!



Mexican Gus, Soft, 3" Brim

3" Brim, Mexican fine pressed palm, soft (not stiffened). Wire in brim for easy brim shaping. (Crown re-shaping not recommended.) 5-1/4 crown. Sizes 6-1/2 to 7-5/8" **Item# hmgsoft3**



Fire-Kissed Mexican Fine (Pressed) Palm Gus

Scorched distressing. 4" Brim, 5-1/2" Crown (creased). Pressed, sanded & stiffened. 6-3/4-7-5/8. Shown with horse hair hatband with side-tassles. Available with other bands. **Item # hmg+FIRE+bhh02tt**

NEW!



Explorer, 2-1/2" Brim

2-1/2" Brim, Mexican green palm, soft. Light brown color. 4" crown. Sizes 6-3/4-5/8. **Item # hmx25grn**

NEW!



Mexican Elko, 5" Brim

5" Brim, Mexican fine pressed palm. Stiffened. 4-1/4" crown. (Re-shaping not recommended.) Sizes 6-3/4 to 7-5/8. **Item #hm5ekf**

**Best
Seller
Top 10**



Boxtop Golden Mexican Palm

4" Brim, 4-3/4" Crown. Brown bound edge. Pressed & stiffened. Re-shaping not recommended. See p.2 for discussion. Sizes 6-5/8 to 7-5/8. **Item # hmbtgold**



Wider crown

Alpine - Mexican Fine (Pressed) Palm

4" Brim, 4-1/2" Crown. Pressed, sanded & stiffened. A wider crown crease than the Cattleman below. (Crown re-shaping not recommended, see p.2) 6-3/4-7-5/8. **Item # hma**

**Best
Seller
Top 20**



SOFT Boxtop Mexican Palm

This hat is exactly like the Boxtop Fine Mexican Palm below, except that no stiffener has been used and the hat is very soft and comfortable. 4" brim, 4-3/4" crown. Pressed, but not stiffened. Minor reshaping to brim can be done. Sizes 6-5/8 to 7-5/8. **Item# hmbtsoft**

NEW!



Explorer, 3-1/2" Brim

3-1/2" Brim, Mexican green plam, soft. Light brown color. 4" crown. Sizes 6-3/4 to 7-5/8. **Item # hmx35grn.**



Boxtop Fine Mexican Palm

4" Brim, 4-3/4" Crown. Pressed & stiffened. Re-shaping not recommended. See p.2 for discussion. Sizes 6-3/4 to 7-5/8. **Item # hmbt**

**Best
Seller
Top 10**



6" Gus, Low Crown

6" Brim, 5-1/4" (A) crown. Item # hg6a+G+E+SSP (as shown with vent eyelets and polyester stampede string); Item # hg6a+G (w/o eyelets and stampede string).



6" Gus, Medium Crown.

6" Brim, 5-3/4" (B) crown. Guatemalan standard palm. Shown with long horse-hair stampede. Item # hg6b+G+sshl (as shown); Item # hg6b + G (w/o stampede string).

**Best
Seller
Top 30**



5" pencil rolled brim
5-1/4" crown

**Best
Seller
Top 30**



5" pencil-rolled brim
5-3/4" crown



5" pencil rolled brim,
6-1/2" crown

5" Brim, Low-Crown Gus, 5" Brim Medium-Crown Gus, 5" Brim, Tall Crown Gus

5" pencil-rolled brim, 3 different crown heights. Guatemalan standard palm. Eyelets and stampede strings optional. Sizes 6-1/2 to 8.

(1) 5" Low Crown Gus, Pencil-rolled brim, Item# hg5a+G; (2) 5" Medium Crown Gus, pencil-rolled brim, Item # hg5b+G, (3) 5" Tall Crown Gus, pencil-rolled brim, Item #hg5c+G

**Best
Seller
Top 40**



El Humongo - 8" Gus

Impress everyone. Keep cool on the desert. Our biggest hat. 8" Brim, 6" crown. Item # hg8b + G (as shown); With stampede string and ventilation eyelets: Item # hg8b+G+3+ssp



Oak Gus

Natural oak-colored palm gus, 4" or 5" brim. Cloth hatband. Sizes 6-1/2 to 8.

4" Brim: Item #hg4a-oak+G, 5" Brim: Item #hg5b-oak+G



**Best
Seller
Top 10**

The Sam Houston A style worn by the father of Texas, Sam Houston. A favorite among re-enactors of the Old South and 1830's Texas. 5" Brim, 5-3/4" crown creased down to 4-1/4". Guatemalan standard palm.

Item #hg5b+N; 4-1/2" brim (not shown) Item #hg45+N



Oak Sam Houston The Sam Houston in our oak-colored palm. 5" Brim, 4-1/4" crown. Available in 4" brim as well.

Item# 5" Brim (as shown) hg5a-oak+N; 4" brim (not shown) hg4a-oak+N



Sam Houston Fine Palm

Our ever popular Sam Houston in our best quality Guatemalan Palm: fine. Comes with a stately 1-1/2" wide black band.

Item# hg5af+N+b15e



6" Brim Sam Houston

This is identical to our very popular 5" Brim Sam Houston but with a bigger brim. 6" Brim, 4-1/4" crown. Guatemalan standard palm.

Sizes 6-1/2 to 8 Item# hg6b+N

**Best
Seller
Top 40**



4" brim
5-1/4" crown

4" brim
5-3/4" crown

4-1/2" brim
5-1/2" crown

4" and 4-1/2" Brim Gus

Pencil rolled brim. Wide black hatband. Guatemalan standard palm. Eyelets and stampede string optional. 4" brim available with wire in brim. Also available with a flat brim in front and back and rolled on the sides. See p.16, middle right. (1) 4" Low Crow: Item # hg4a+G. (2) 4" Medium Crown: Item # hg4b+G. (3) 4" with wire in brim and no pencil roll: Item # hg4aw+G. (4) 4-1/2" brim: Item # hg45+G

**Best
Seller
Top 40**



Fine Palm Derby

2-1/2" brim, 5-1/2" crown. Rolled brim, wide elastic hatband. Guatemalan Fine Palm (shown), or Guatemalan Standard Palm.

Fine Palm Item # hg25f+DE+b15e

Standard Palm Item # hg25+DE+b15e



Oak & Amber Laced Gus-5" Brim

Natural oak-colored palm gus, 5" brim. Latigo-laced in brown, bead and bone hatband. Sizes 6-1/2 to 8.

Item # hg5b-oak-amb



Oak Derby

2-1/2" roller brim, 5-1/2" crown. Oak-colored Guatemalan palm. 1-1/2" wide ribbon band.

Item# hg25-oak+DE+b15e



Oak & Amber Laced Gus-4" Brim

Natural oak-colored palm gus, 4" brim. Suede-laced in brown, bead and bone hatband. Sizes 6-1/2 to 8.

Item # hg4a-oak-amb.



Oak Gus with Bound-Edge

Natural oak-colored palm gus, 4" or 5" brim. Coffee bound-edge and matching hatband. Sizes 6-1/2 to 8.

4" Brim: Item #hg4a-oak+G+BE, 5" Brim: Item #hg5b-oak+G+BE



Laced Oak Gus with Braid

Natural oak-colored palm gus, 4" or 5" brim. Suede-laced brim, braided suede hatband. Sizes 6-1/2 to 8.

4" Brim: Item # hg4a-oak-braid, 5" Brim: Item #hg5b-oak-braid



Santa Fe Cattleman- 4" Brim, 4-1/4" (A) Crown (creased) with coffee bound-edge and turquoise suede lacing. Horn & bead hatband. **Item # hSF4a+C** (as shown); **Gus crease** (not shown) **Item # hSF4a+G**.



**Best
Seller
Top 20**

RB's Hat

Based on the hat worn and styled by R. B. Hathcock in the picture below. 3", Guatemalan Fine Palm, sloped fedora crease, shown with suede lace hatband. **Item# hg3f+SF+bsl**. Available in standard palm (not shown) **Item# hg3+SF+bsl**.



Taos- 4" Brim, 4-1/4" (A) Crown (creased) with chocolate brown bound-edge and turquoise suede lacing. French braid horse hair & bead hatband. **Gus crease** (as shown) **Item # hTaos4a+G**; **Cattleman crease** (not shown) **Item # hTaos4a+C**.



Russel (R.B.) Hathcock



Longhorn Brand Gus

4" Brim Guatemalan standard palm, distressed with longhorn skull images. 5/8" wide leather hatband. Wire in brim. **Gus crease:** **Item # hLHB4a+G**



Austin - 5" Fine Palm Gus

5" brim, 5" crown, Guatemalan Fine Palm. Gus crease. Coffee bound-edge, matching eyelets, leather hatband and leather stampede string. **Item# haust5af+G+E+sslt**



5" Brim Oak Two-Step

5" brim, 5-3/4" crown, oak-colored Guatemalan standard palm, Gus crease, black bound-edge, fine natural-colored lacing. Sizes 6-1/2 to 8.
Item# h2s5oak



Texas Two-Step - 5" brim, Low Crown

This is an exquisite hat! Black grosgrain bound edge and finely laced in natural leather. Long horse hair stampede string. Guatemalan fine palm.
Item # h2s5



Amber Two-Step

4" Guatemalan fine palm with bound-edge and finely-laced brim. Amber bone and bead hatband with horsehair tassels. 4" brim (shown) Item # h2s4amb; 5" brim (not shown) Item # h2s5amb



Khaki & Tan Two-Step

Khaki bound-edge and tan fine lacing (1/2" spacing) make this a hat to dress up in. Other color trims available. Guatemalan fine palm.
Item # h2s5kt

**Best
Seller
Top 20**



Fine Plantation, 4" Brim

4" brim with pencil roll, Tear Drop crown, wide elastic band with bow. Guatemalan fine palm.
Item #hg4f+PL+bblkbw

NEW!



Jacob's Hat

3" Brim, Guatemalan standard palm. 4-1/4" crown (creased). 5/8" brown leather hatband, tan leather stambede string. Sizes 6-1/2 to 8.
Item # hg3+BK+b58brown+sslt



Moab

5" brim, 5-1/2" crown (creased). Gus crease. Wide imitation leather lacing, 7/8" wide beaded hatband with horse hair tassels. Guatemalan standard palm. Sizes 6-1/2 to 8. Item # hMOAB5b; Item # hMOAB5a (low crown)"



La Ranchera

4" Brim, 5-1/4" Crown, oak-colored palm, Gus crease, black bound-edge, 1/4" wide genuine leather lacing. Beaded hatband with horse hair tassels. Guatemalan standard oak-colored palm. Sizes 6-1/2 to 8.

(1) 4" Brim (shown), Item #hranch4aoak,
(2) 5" brim (not shown), Item #hranch5boak

Best Seller Top 40



(Blue) Diamond Gus, 4" Brim, Low Crown

Blue diamond "hitched webbing" bound-edge and matching hatband. Guatemalan standard palm.

Item # hDG4a (low crown); Item # hDG4b (med. crown)



(Blue) Diamond Gus, 5" Brim, Medium Crown

Blue diamond "hitched webbing" bound-edge and matching hatband. Available in other colors and in 4-1/2" brim as well.

Item # hDG5b (medium crown)

NEW!



Guatemalan Short Top Hat

2-1/2" brim, 5-1/2" crown. Guatemalan standard palm, with rolled brim as shown: Sizes 6-5/8 to 7-3/4. Item # hgtop25x55+R. With flat brim (not shown); Item # hgtop25x55.



Circle of Eyes Gus, 4" Brim, Low Crown

Circle of Eyes "hitched webbing" bound-edge and matching hatband. Guatemalan standard palm. Item # hCOE4a +G (low crown as shown); Item # hCOE4b +G (med. crown)



Crazy Horse Two- 3-1/2" or 4" Brim

Same as the Nuts & Bolts but with a suede-laced hatband. Distressed Guat. std palm. 3-1/2" or 4" Brim, 4-1/2" Crown (creased). Wire brim. Sizes 6-1/2 to 8. **4" brim: Item # hCR2-sl; 3-1/2" brim Item #hCR2-35**



**Best
Seller
Top 30**

The Outlaw

3" brim, Guatemalan Fine Palm, Outlaw Crease, pencil rolled brim. Suede lace hatband. **Item # hg3f+OL+bsl**. Available in standard palm, (not shown), **Item # hg3+OL+bsl**



Crazy Horse Three

Funky creased cattleman with wire in brim. NOT distressed. Suede lace hatband. **With 4" brim (shown): Item # hCR3-sl**
With 3-1/2" brim (not shown): Item #hCR3-35



Nuts & Bolts - 3-1/2" or 4" Brim

Distressed Guatemalan standard palm with nuts & bolts on suede hatband. 4" Brim, 4-1/2" Crown (creased). Wire in brim for easy creasing. Sizes 6-1/2 to 8. **4" brim: Item # hNB4a, 3-1/2" brim: hNB35a**



Crazy Gus - 3-1/2" or 4" brim

Funky curled-brim gus with a suede-laced hatband. 4" Brim, 5" Crown. (creased). Wire brim for easy creasing. Sizes 6 to 8. **4" Brim: Item # hCG4a; 3-1/2" brim: Item #hCG35aw**



**Best
Seller
Top 20**

Scorched Mexican Gus

Very soft hat, flame-distressed. Braided leather hatband and stamped string. 4" brim with wire.
Item # hmg-w2



Pinto Visor

Two sizes: medium (6-7/8 to 7-1/8) and large (7-1/4 to 7-1/2). Guatemalan standard palm. 4-1/2" Brim in front tapering to 1" in back. 4-1/4" crown. Cord closure in back allows for size adjustment.

Item# M: hgpbom-M; L: hgpbom-L



**Best
Seller
Top 40**

Open Road

2-1/2" brim, Guatemalan Fine Palm, Open Road Crease, 2-ply hatband. Item# hg25f+OR+2ply. Available in standard palm (not shown). Item # hg25+OR+2ply



Last Call - Bottle Cap Hat

Beer Caps on brim and beer cap hatband. Brands on caps will vary. 4" brim. Sizes 6-1/2 to 8. Guatemalan standard palm.

Item # hlast4a

**Best
Seller
Top 30**



Golden Mexican Fedora

A dapper fedora in the golden colored palm. 1.8" Brim.

Item# hmfgold18



Last Call Light

Same as the Last Call, but with bottle caps spaced out and made with our Palm River economy palm. Not distressed.

Item # hlast-eco

**Best
Seller
Top 40**



Mexican Fine Palm Fedora: Natural

A dapper fedora in the natural colored palm. 1.8" Brim.

Item# hmf18

**Best
Seller
Top 10**



Fine Palm Tear Drop with Brown Leather Band
3" Brim, Tear Drop crease, 5/8" wide brown leather band. Guatemalan fine palm. **Item # hg3f + TD + b58brown**; also available in standard Guatemalan palm (not shown): **Item# hg3+TD+b58brown**



2-1/2" Tear Drop, Fine Palm with Brown Leather Band
Fine Guatemalan palm, 2-1/2" brim, Tear Drop crease. 5/8" wide brown leather band. Sizes 6-5/8 to 8. Also available with brown leather band. **With brown band (shown) Item # hg25f+TD+b58brown**; **With black band (not shown) Item # hg25f+TD+b58black**.



3" Fine Palm Tear Drop with Black Leather Band
3" Brim, Tear Drop crease, 5/8" wide brown leather band. Guatemalan fine palm. **Item # hg3f + TD + b58black**; also available in standard Guatemalan palm (not shown): **Item #hg3 + TD + b58black**



2-1/2" Tear Drop, Fine Palm
Fine Guatemalan palm, 2-1/2" brim, Tear Drop crease. Sizes 6-5/8 to 8. **Item #hg25f+TD**



Fine Palm Fedora
3" Brim in the Guatemalan Fine Palm. A nice dress hat. **Item # hg3f + F**



Fedora
3" Brim. Available in larger brim widths to 6". Guatemalan Standard Palm. **Item # hg3 + F (3" brim, as shown)**; **Item #hg35 + F (3-1/2" brim, not shown)**; **Item # hg4b +F (4" brim, not shown)**.

**Best
Seller
Top 20**



Casa Blanca

4" Brim, Tear Drop creased crown. 1-1/2" wide grosgrain hatband.
Guatemalan standard palm.
Item # hcasa4b



Gambler

3-1/2" Brim. Standard Guatemalan palm. Available in 4", 5" & 6" brim.
Item # hg35 + N (3-1/2" brim as shown)



2-1/2" Brim Oak Tear Drop

2-1/2" brim, Tear Drop crease. Cloth band. Guatemalan oak-colored palm.
Item #hg25-oak+TD



Fine Palm Gambler 3-1/2" brim. Shown in our Guatemalan Fine Palm. Leather hat band. Shown in brown, available with black leather band. Item# with brown band: hg35f+N+b58brown; with black band: hg35f+N+b58black



Trilby Pinto Fedora

Same as the Pinto Fedora to the right, except with a "Trilby" fedora crease. 2" brim Trilby Fedora in the Guatemalan palm, natural and oak-colored mixed in the braid. Includes the black bow band.
Item# hg2p+TF



Pinto Fedora 2" brim Fedora in the Guatemalan palm, natural and oak-color mixed in the braid. Includes the black band.
Item# hg2p+F

**Best
Seller
Top 20**



The Española

4" Brim, 4" vented crown. Guatemalan standard palm.

Item # hge

NEW!



Bolero

The Española in a solid hat body. 3" brim (shown), Guatemalan standard palm. 4" crown. Available in 3-1/2" brim. Sizes 5-1/2 to 8.

3" brim Item # hge3s; 3-1/2" brim Item # hge35s

**Best
Seller
Top 40**



Oak Española

4" brim, oak Guatemalan palm with venting. Sizes 6-1/2 to 8. Shown with brown leather band with brass buckle. Available with cloth band.

Item # hge-oak-bldbrn38. With black cloth band, Item# hge-oak

NEW!



Oak Bolero

The Española in a solid hat body. 3" brim (shown), Guatemalan oak-colored palm. 4" crown. Available in 3-1/2" brim. Sizes 5-1/2 to 8.

3" brim Item # hge3s-oak; 3-1/2" brim Item # hge35s-oak



Española w/ Reata Brim

The Española with the brim shaped like the Reata (p. 6)

Item #hge+RT



The Española Two-Step

4" Brim, 4" vented crown. Black bound and finely laced brim. Other trim colors available.

Item # hge2s



Grosgrain Ribbon for Edge-Binding

Shown is a sampling of colors available for edge-binding. A hatband of the same color is also provided in either 3/8" or 5/8" width. Swatches are available upon request. Printed colors may differ from actual ribbon color. Polyester - will not run.



Stampede Strings/Chin Straps

SSHH - braided horse hair; SSHHL - long braided horse hair; SSHH501L - braided horse hair with cotter pin connectors; SSLT - tan leather lace; SSLBR - brown leather lace; SSLB - black leather lace; SSP - black polyester woven cord with plastic cord stop; SSP-BR - A brown polyester woven cord with cord stop.



Large Eyelets

1/4" diameter. Black, brown, red, blue.

Item# EB

Regular Eyelets

1/8" diameter. Black, brown, red, green, blue, brass, green and more.

Item# E

Eyelet Options

Eyelets can be added to any hat. Regular and large eyelets are used 3 to a side. Either can be used for stampede string holes, as well.



Eyeletting Kits

Install your own eyelets. Great for stampede string holes (1/4" recommended). Each kit comes with hole punch, eyelet setter and 100 eyelets.

1/8" Kit - Item #ek18

1/4" Kit - Item #ek14



Sweatbands

All Guatemalan palm leaf hats come with a polyester/cotton twill cloth sweatband with foam padding and a nonwoven backing as standard. The Mexican hats have a synthetic cloth and foam band that is absorbent and breathable. The Kids hats and the Palm River Cattleman Heat Pressed hats have an elastic sweatband that fits a range of sizes.

9 Bead Hatbands (approx. 5/8" wide)

Here's a sampling of the beaded hatbands we have in (1) a stretch bead band, a continuous loop that stretches, and (2) in a non-stretch band with suede tie ends. More on our website.



All beaded items shown are made in Guatemala with Czech beads.

15 Bead Hatbands (approx. 1" wide)

The hatbands shown have a suede backing and suede tie ends. They are very nice. We also have the same designs available without the suede backing..



Peyote Round Bead Hatbands

Beautiful, peyote stitched, round hatbands 3/8" wide. A complete loop. Rear slide closure: braided interior cord ends (black) pass through a beaded tube, 1-1/2" long, in the same design. Item #bhg-pey-(letter code).



Visit our website to see more hat bands and accessories:

www.sunbody.com

3 Strand Horse Hair - bhh03



bhh03-2



bhh03-3



bhh03-7



bhh03-9



5 Strand Horse Hair - bhh05



bhh05-1



bhh05-3



bhh05-5



Double Side Tassel bhh02tt-01



bhh02tt-2



Bead Wrapped Horse Hair - bhh82b-6



bhh82b-6



3/4" "Hitched" webbing Bands & Edge Binding



BW122

BW120

BW142

Rear closure for 3/4" wide
hitched webbing bands above:
BW120-BW122

Side closure for band below
(need to be glued to hat)



1/2" "Hitched" Webbing Bands



BW115

BW117

Barbed Wire Hatband (leather) - bbwire



Leather Hatbands - 5/8" Wide, Loop Closure

b58black

b58brown



Leather Hatbands - 1/2" Wide, Buckle Closure

blb12brn

blb12blk



Old West Hatband - 1/2" wide, Antique Brass Spots and buckle, Item #bowb



Bands may be purchased separately or added to
any hat.

Visit our website to see more hat bands and accessories:

www.sunbody.com

Introducing a new hat line...

PALM RIVER

economy palm leaf hats

Perfect for fairs, festivals, concerts, and tourists. The same rugged, reshapable Guatemalan palm leaf hats made with a slightly coarser braid that is not as white and has more color variation. Comfortable cloth sweatbands, 5-6 strands of braid per inch. We can shape and style these hats the same way we do our other Guatemalan palms. If you don't see what you're looking for, ask us.

Palm River Open Crown

Reshapable
4" Brim,
5-1/4" crown.
Item # hg4a-eco



Palm River Cattleman Hand Creased

4" Brim,
4-1/4" crown.
Item # hg4a-eco+C



Palm River Crazy Horse II

Distressed,
suede-laced hatband
4" Brim, 4-1/4" crown.
Item # hcr2-eco



Palm River Cattleman Heat Pressed

4" Brim,
4-1/4" crown.
One size
elastic
sweatband.
Not reshapable.
Item # hg-ecm (med) Item # hg-ecl (large)



Palm River Gambler

4" Brim,
4-1/4" crown.
Item # hg4a-eco+N



Palm River Gus

4" Brim,
4-1/4" crown.
Item # hg4a-eco+G



Palm River Sizes
6-3/4 to 7-5/8

*Meet some of the people who make the hats
& wear the hats...*



**Juana Morales, hatmaker,
Guatemala.**



**Randy Ruffing roping in the
“crazy wind that moves rocks”
in Mountain Home, Idaho.**



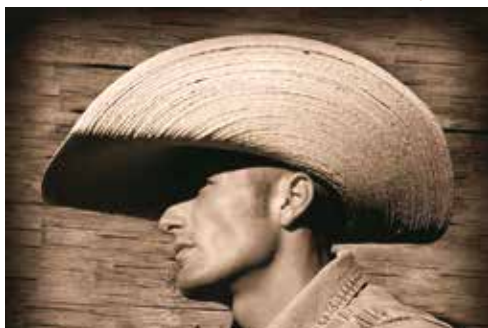
**Reata Brannaman has turned the
“Reata” styled hat she is wearing
into our #1hat. See page 6.
Thank you, Reata!**



**Domingo Reynoso, Hatmaker,
Guatemala**



**Elly Spencer is an avid horse rider and loves
being at the barn.**



Jeb Leighton, Amarillo, Texas.



**Georgia Lethbridge mucking around whilst
work is on in Queensland, Australia.**



**Basilio Mendoza, Hatmaker,
Guatemala**



**Don Contreras, photographer and
Civil War re-enactor, convinced us
to sell tophats. Thanks, Don!**



**Peter Bonner, of Historical and
Hysterical Tours, Atlanta, GA.**



**Tomas Hernandez, Hatmaker,
Guatemala**

SunBody® Hats

3580 E TC Jester Blvd

Houston, TX 77018

(800) 310-7093 (713) 861-5133

fax: (713) 861-0619

email:Info@sunbody.com

**Best
Seller
Top 10**



6" Gus

6" brim, 5-1/4" (A) crown. Very popular among re-enactors, single action shooters, football coaches and fisherfolk needing shade. A 5-3/4" (B) crown, and other brim-widths are also available.

Item # hg6a+G+E+SS (with ventilation eyelets and stampede string as shown); Item # hg6a + G (without stampede string or eyelets.)

See page 16.

Sam Houston

5" Brim, 4-1/4" crown (creased). Guatemalan standard palm. Also available in 4" brim and 6" brim. See page 17.

Item #hg5b+N

**Best
Seller
Top 10**



SunBody® Means Service

We stock all of our hat bodies all year. Open crown hat orders, 4" cattlemen, and many of our most popular hats are shipped the same day or next day. Allow 2-5 days for shaping and eyeletting and 7-10 days for bound-edges and lacing. March through July are especially busy months. Please order as early as possible to avoid delays. See page 24 for the multitude of options we offer. Office hours are Monday through Friday 9:00 am - 5:00 pm CT.

**Best
Seller
Top 10**



www.sunbody.com

Visit our website to see new products and see what's on sale. More hats and hatbands are shown online than are in the catalog.

Fine Palm Tear Drop

With Brown Leather Band.

3" Brim, Tear Drop crease, 5/8" wide brown leather band. Guatemalan fine palm.

Item # hg3f + TD + b58brown; also available in standard Guatemalan palm (not shown): **Item # hg3 + TD + b58brown.**

See page 24.